

2012

“ ”

“ ”

“ ”

2008

t

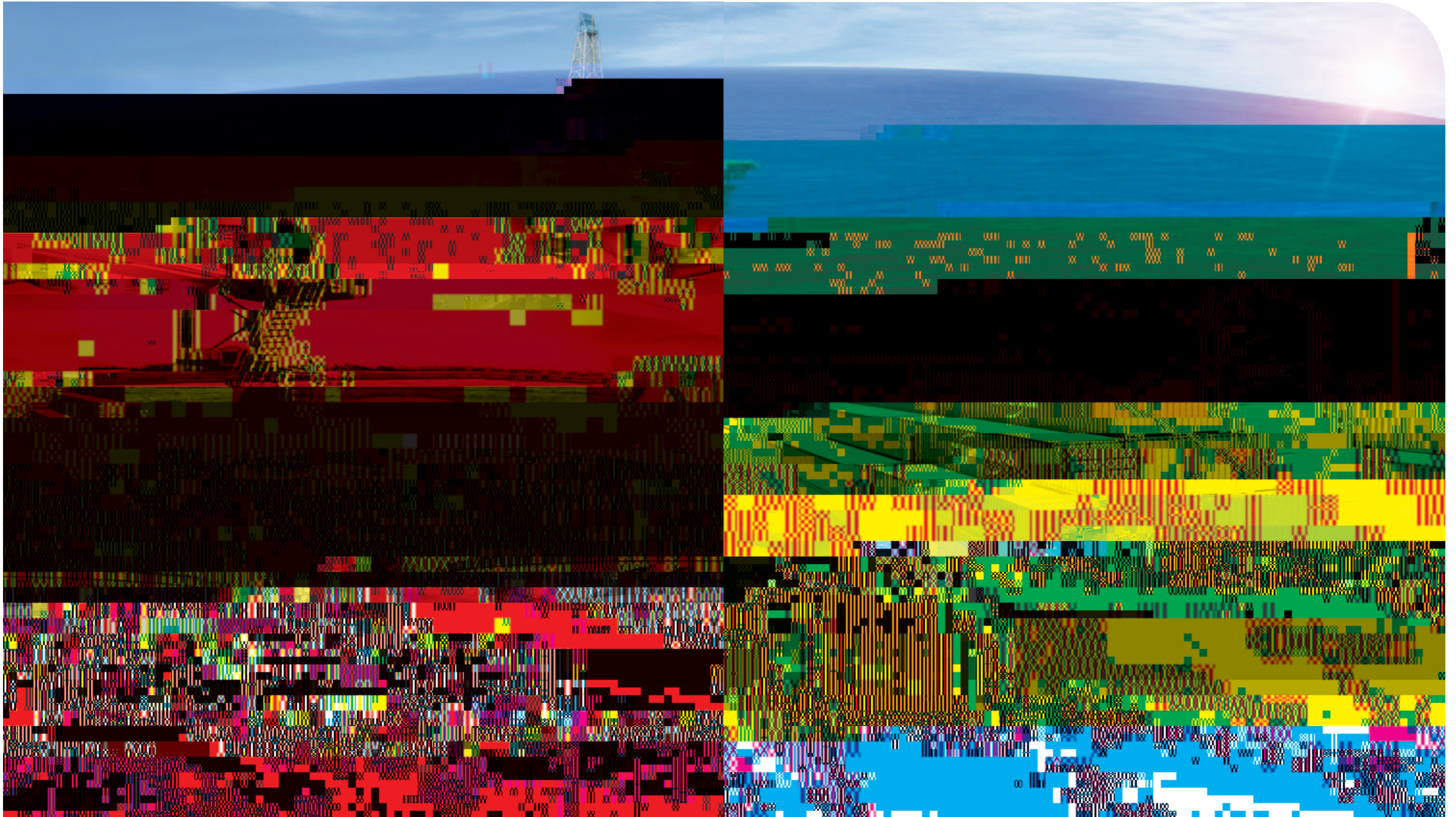
i

“ ”



>>

>>





CHINA INTERNATIONAL MARINE CONTAINERS (GROUP) CO.,
LTD. CIMC



"

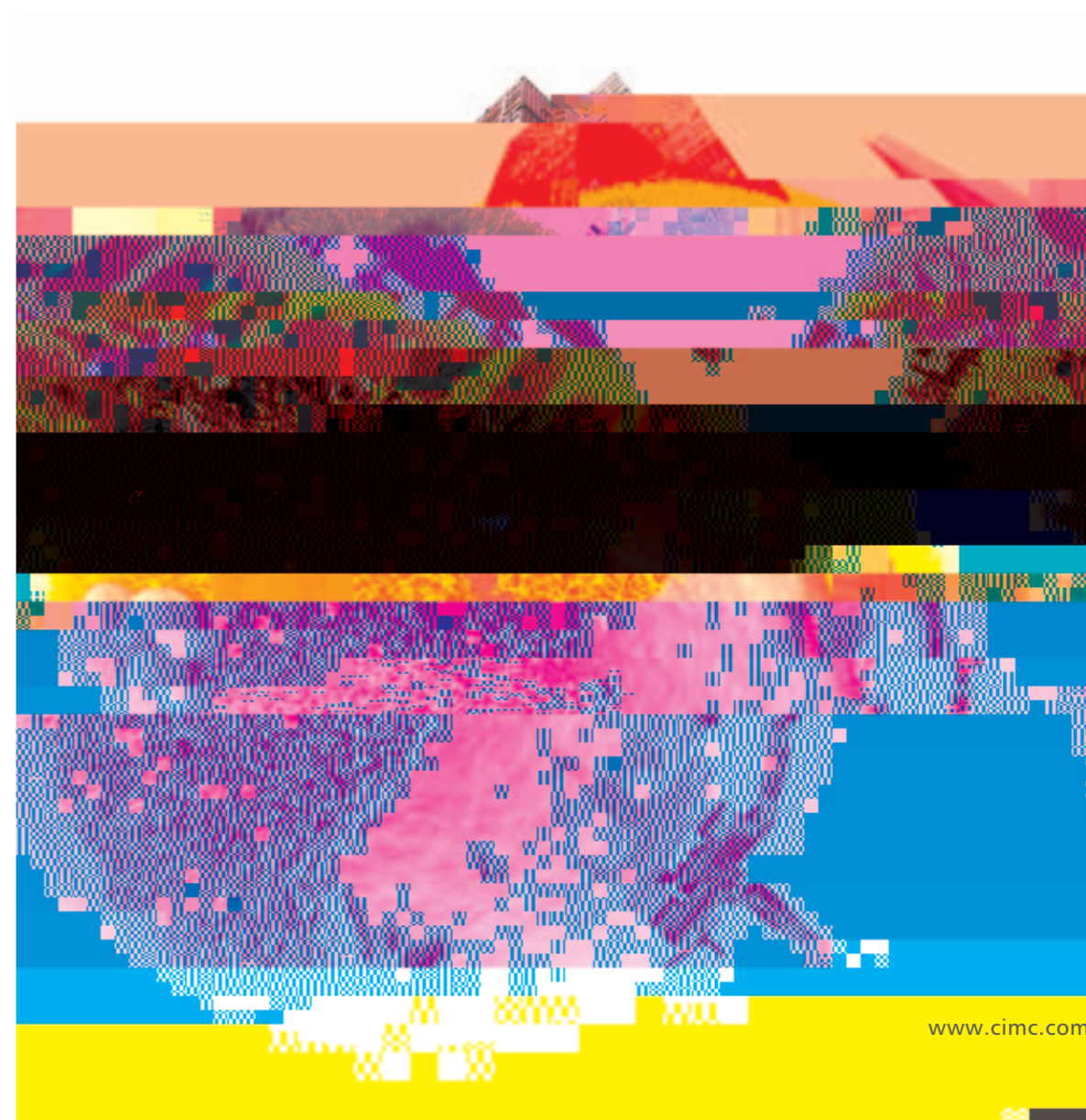
"



		•
		•
		•
		•
		•
		•
		•
		•
		•
		•

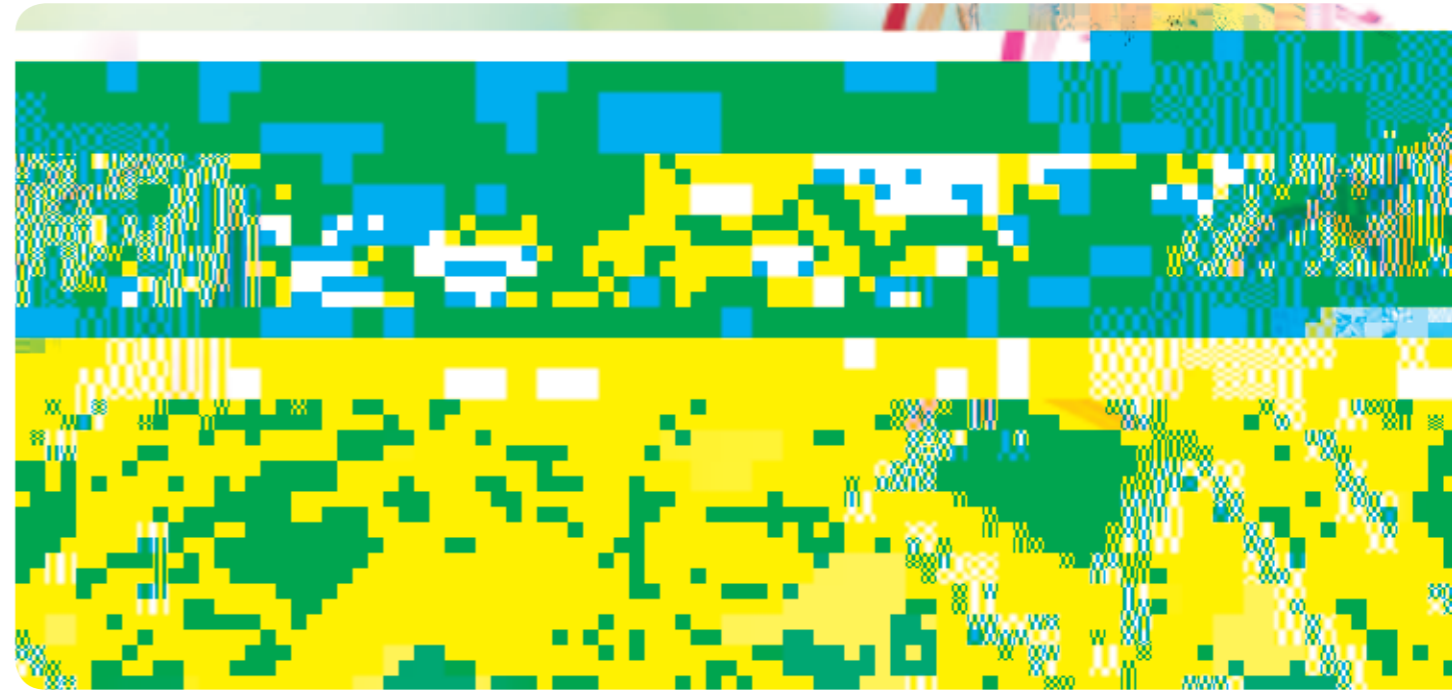
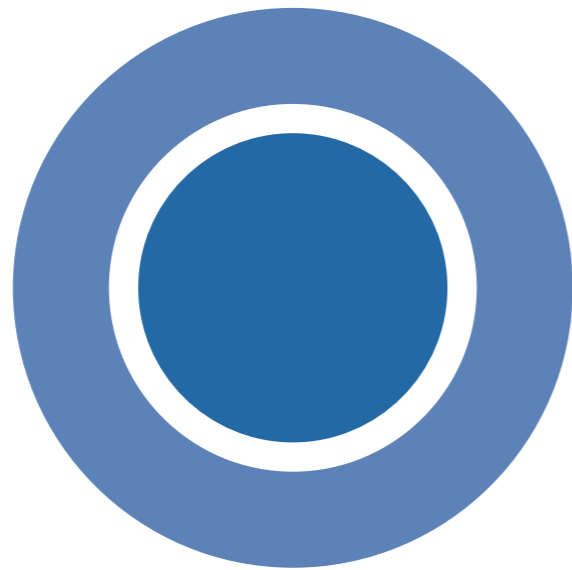
3)

2)



1)

0,38U





>>

>>

>>

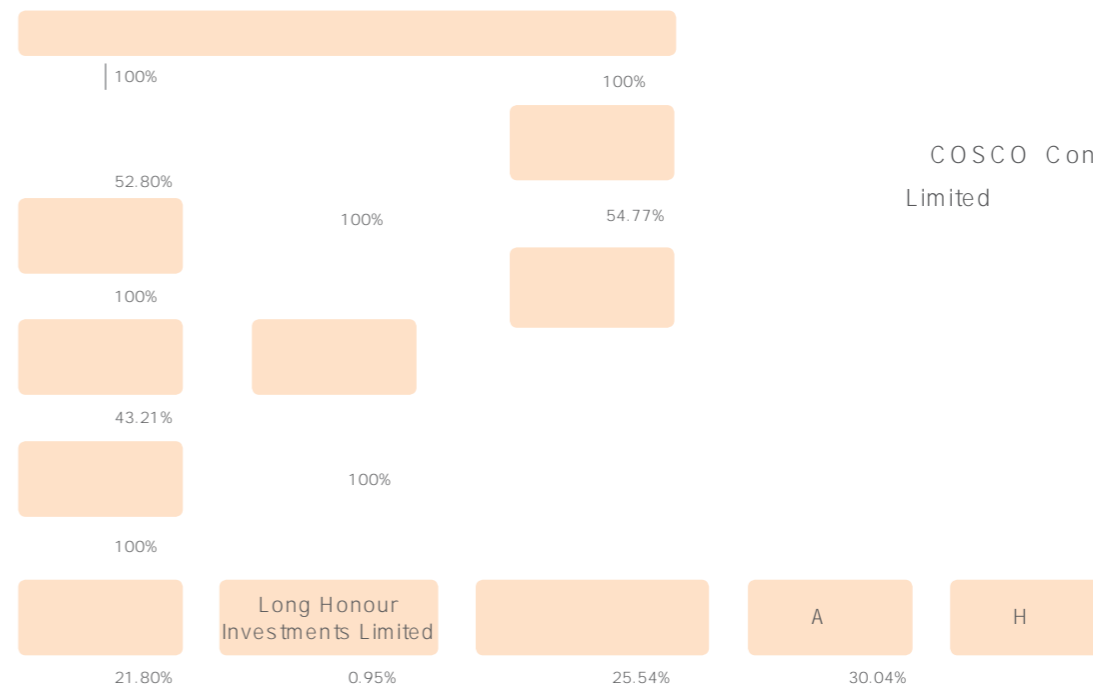
>>





30

30



COSCO Container Industries Limited

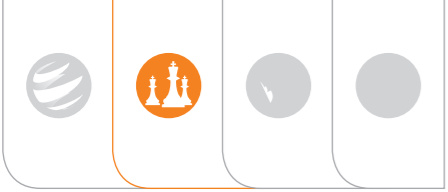


■ A 30%
■ HKSCC NOMINEES LIMITED H 54%
■ 16%
■ A

1994 1 17
 1,200 A
 8,900
 1994 3 23 1994 4 8
 B
 H
 2,662,396,051 A 1,231,915,542 H
 1,430,480,509
 [1994]22
 1,300 B
 B A
 2012 12 19

1980	1987	1994	2012
50%	45%	29.45%	25.54%
50%	45%	29.45%	21.8%
	10%	6.54%	52.66%
		34.56%	

1994	2001	2003
3	3	2
3	3	2
1	2	1
2	3	3







>>

>>

>>

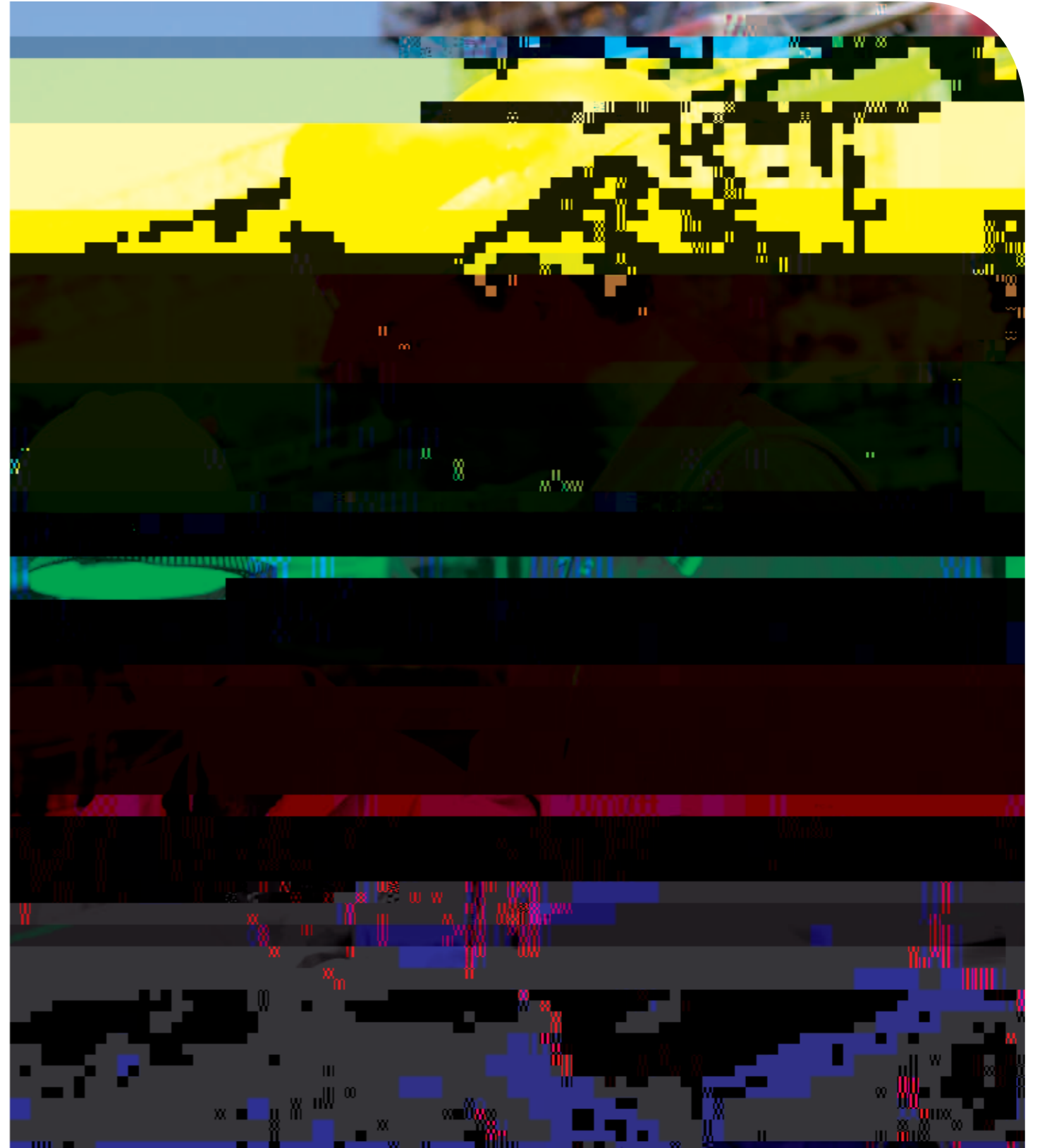
>>

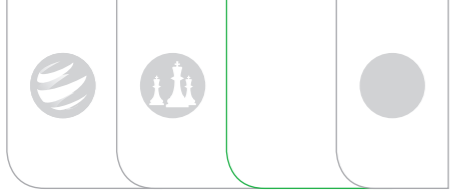
>>

>>

>>

>>







25 " " " " 9
5 20

2012

		2012
2	6	2

- - t



2

2012



3

LEED

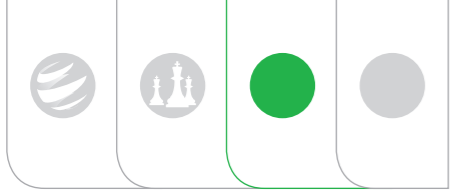
2012

I

S









1	MH/T 6028-2003		
2	JB/T 10474-2004		
3	JB/T 10475-2004		
4	GJB 4432-2002		
5	GB 17907-2010		

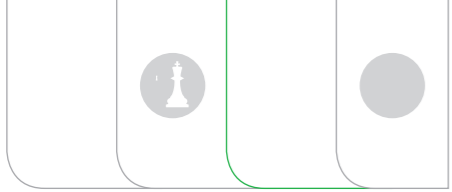
7
" " 330

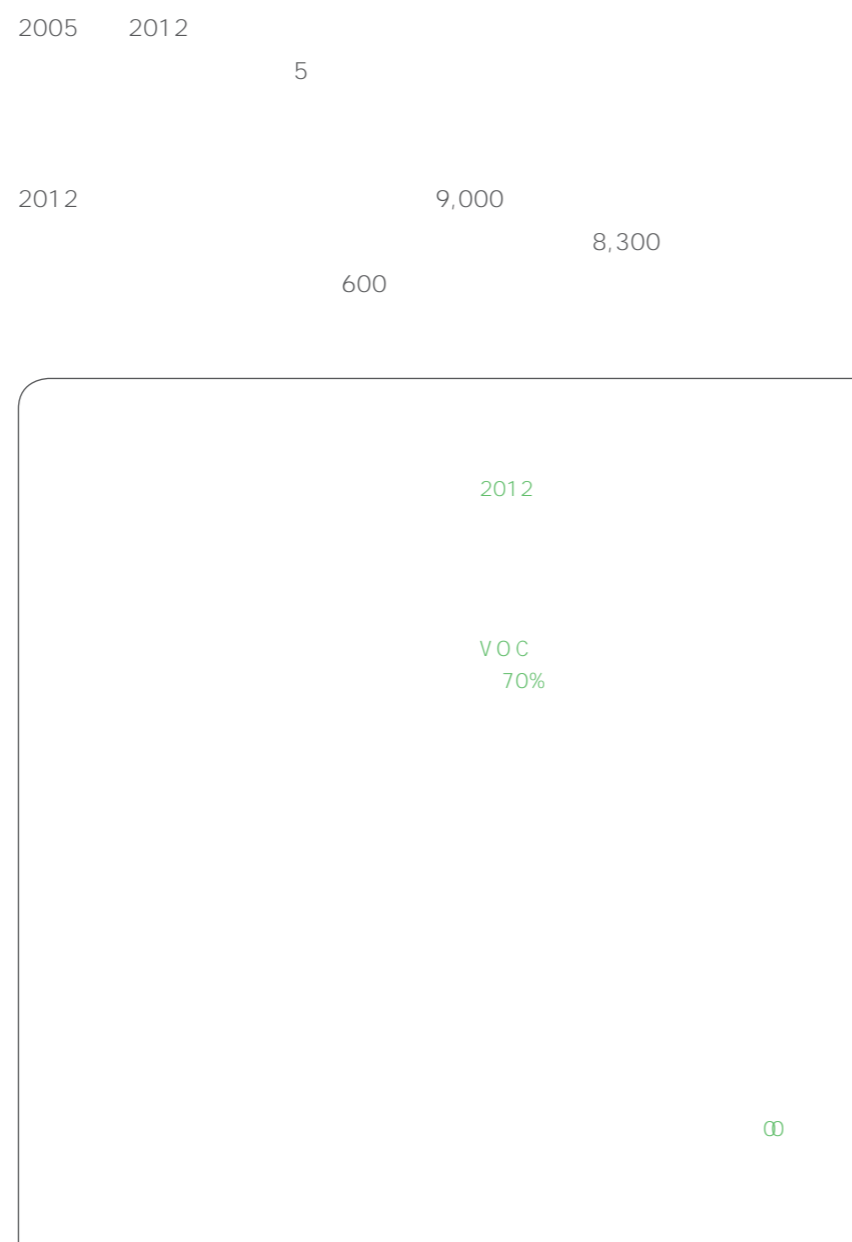


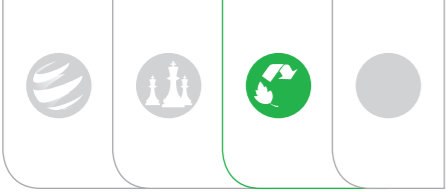
2011 2011 9
2011
2012 12
"



			14%
		30	
BSG	1		
	2	" "	17%
	3	" "	
			(VOC)
	6 TEU		3,000
		16	144.2 m ³ /h
			11,000
	3	620	120,000
			120,000
		500	1,000
		36%	
















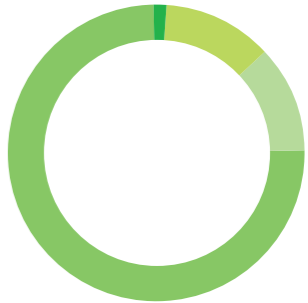


2012 12 31

58,535

	9,869	4,884	43,782	764	6,881	6,953	43,937
(%)	16.85%	8.35%	74.80%	1.31%	11.76%	11.88%	75.06%


1200

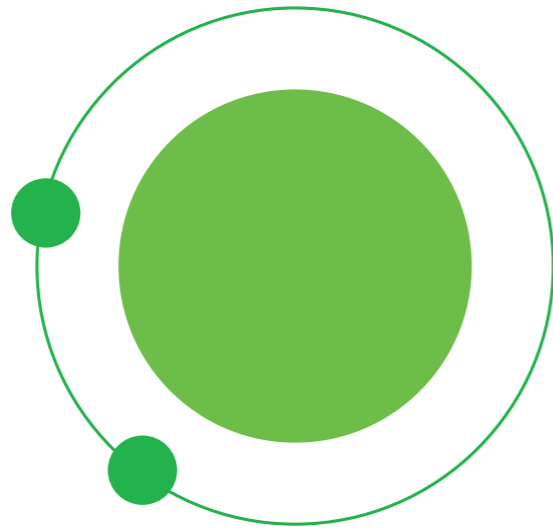


2012

100%



t



2012

2010 6

A

2012
2011 4

BC

2012

" BC "

2007

MBA

IUMBA

2

2012

13

30

" "

" "

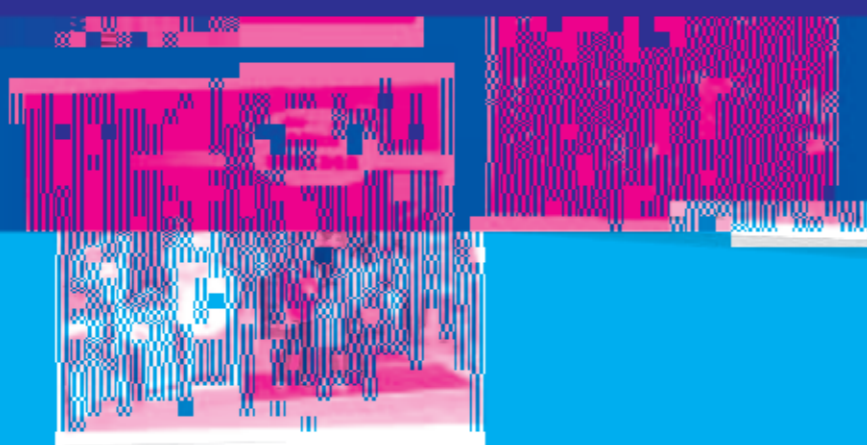
" " IT

".....

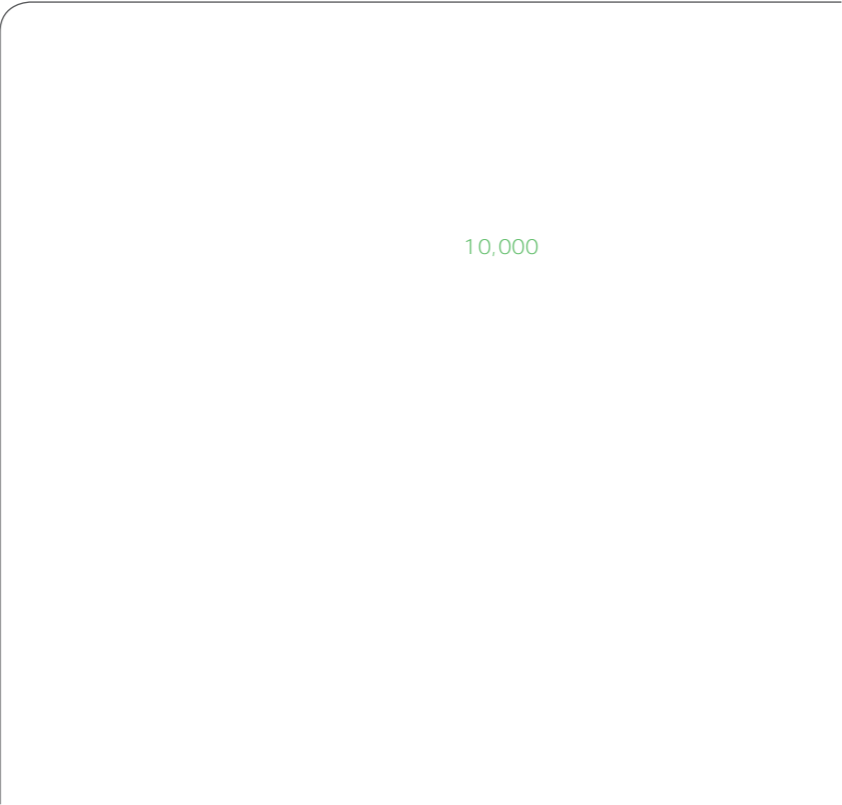
I- Learning

I- Learning









1		
2	ê	
3		
4		
5		
6		
7		
8		
9		
10		
11		
12		
13		
14		
15		
16		
17		
18		
19		
20		
21		
22		
23		
24		
25		
26		
27		

2012
 20 NGO
 15 NGO
 2012
 130



1 2013 2013 2.4%

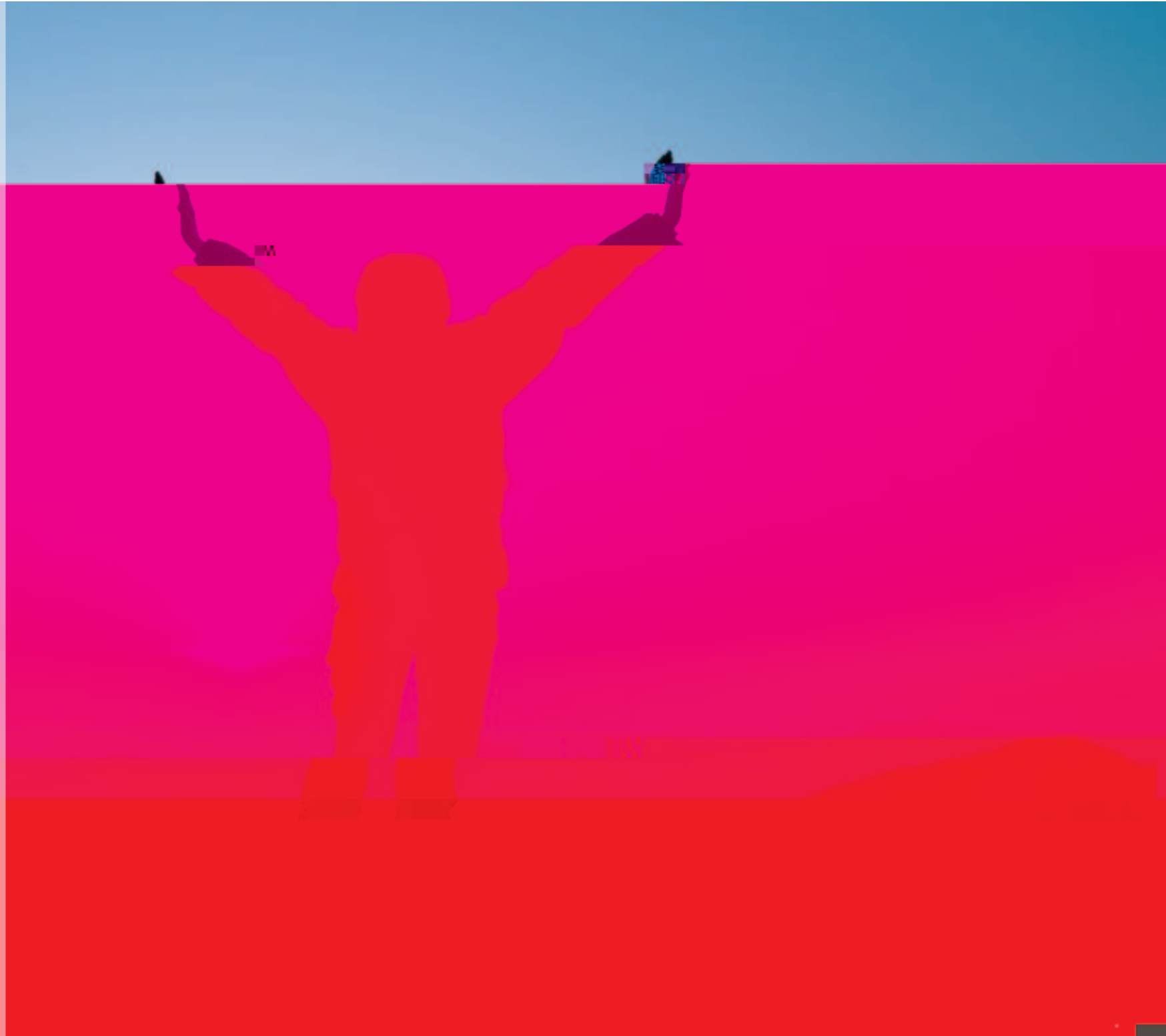
2 8% Global insight
2013 7.5- 7.8% GDP
8% GDP 7.5%

3

4

5

2020





2013

1

2

3

4

5

ONE



1

2

3

4

5

e-mail: _____

0755- 26691130

0755- 26692707

518067